



**FOR SALE**  
*\$700,000*



**Private Estate on 70 acres of Pristine Land!**  
[www.100RanchRoad.com](http://www.100RanchRoad.com) | Fort Motte, SC

Justin D. Albright  
960 Morrison Drive, Suite 100 | Charleston, SC 29403





### Private Country Estate

**RARE Charleston** presents a unique opportunity to purchase a private country estate on approximately **70 acres** in South Carolina's mid-state area. This sprawling estate is a recreational dream!

Enter the property on a paved driveway over a mile long and arrive at a **custom 4,500+ square foot Southern Log main house** with wraparound covered porches perfect for enjoying relaxing views of the rolling pastures, **six surrounding ponds**, and a large windmill. Enjoy only the comforts and sounds of country living while relaxing in the large custom pools and hot tub! Need a place to store your prized collections? There are **three detached garages** perfect to protect and store your valued assets.

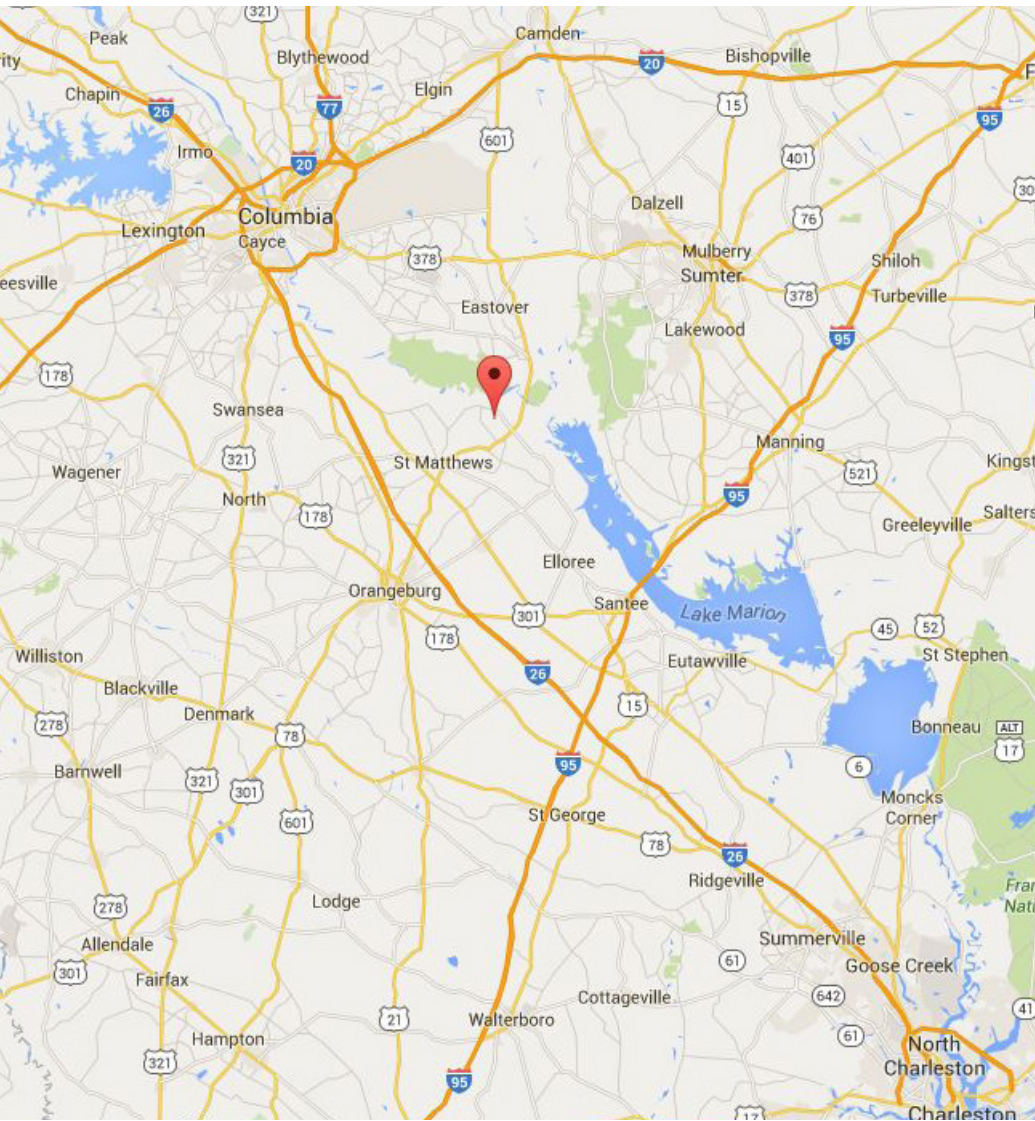
The expansive property is ideal for hunting with **hunting stands** positioned throughout the acreage to hunt dove and quail, as well as Fort Motte's large deer population.

There are countless additional uses for this one-of-a-kind estate. **Large extended families or multiple family owners** will have plenty of space to gather for reunions, holidays, or birthdays. Columbia, SC, and Charleston, SC, both offer numerous direct flights from all over the country to **bring families, friends, or coworkers together for a memorable visit!**

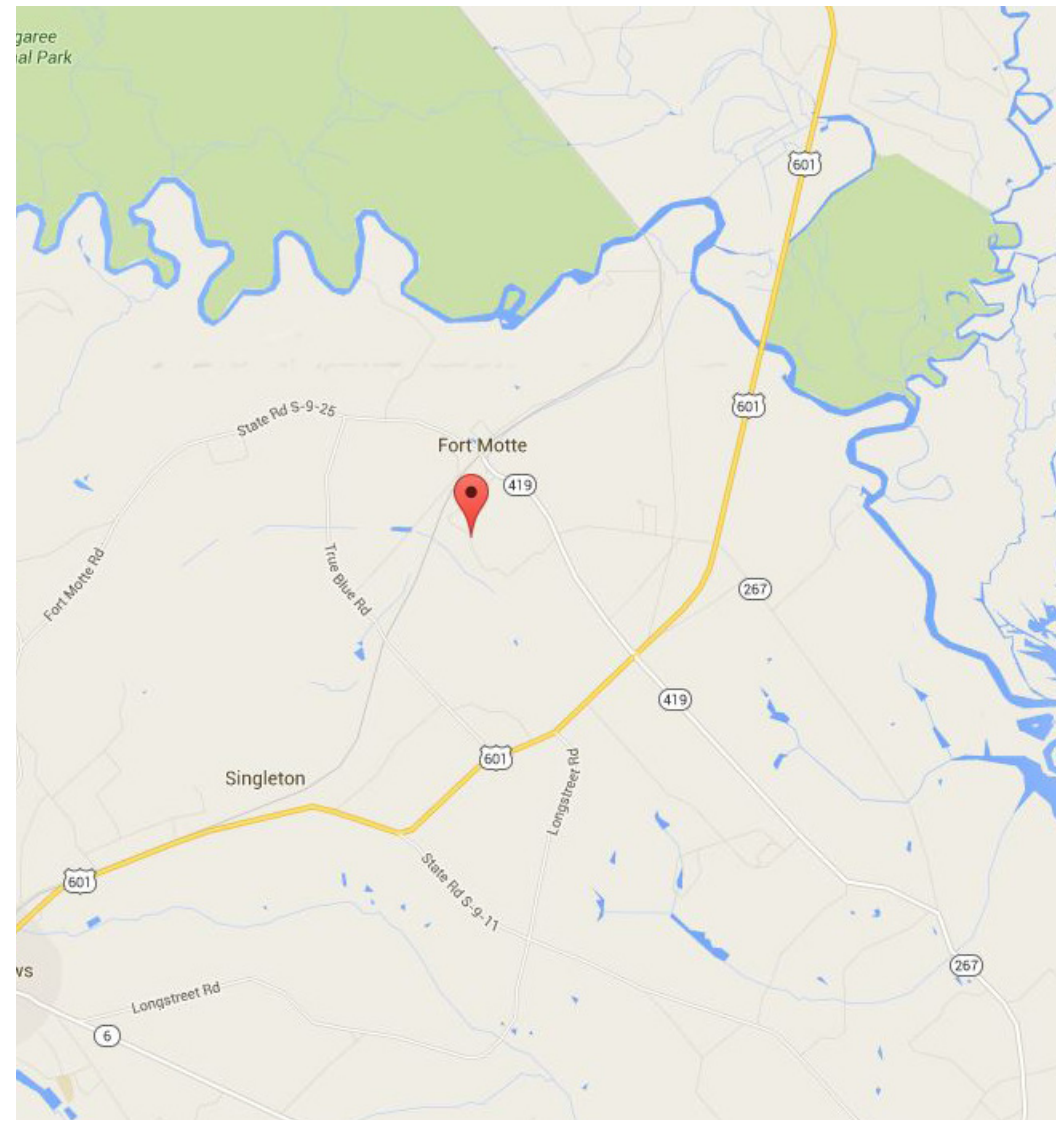




## Region Overview



## Area Overview





## Property Overview





## Sweeping Property Views

Step out of the ordinary and into the extraordinary! It won't take long to get used to these views. Your mind and body will thank you for it.





## Main House

Relax outside in nature in your own custom designed swimming pools and hot tub.





## Main House

Large bedrooms and bathrooms for yourself and all your invited guests.





## Detached Main House Garage/Carport

House guests will relax in their own space above the detached 2-car garage and 3-car carport. The 2,116 SF building has 2 bedrooms, 1 bathroom and a den upstairs with an additional bathroom and office on the first floor level.





## Custom Built Detached Garages\*

This is a must see feature for collectors of any item of any size. Spend hours devoted to your passion in this impressive space.

\*Vehicles not included in sale of property

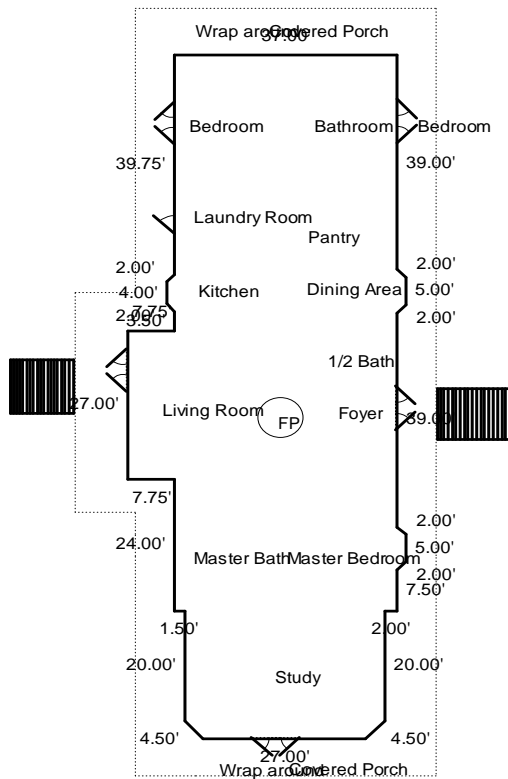


Justin D. Albright  
960 Morrison Drive, Suite 100 | Charleston, SC 29403

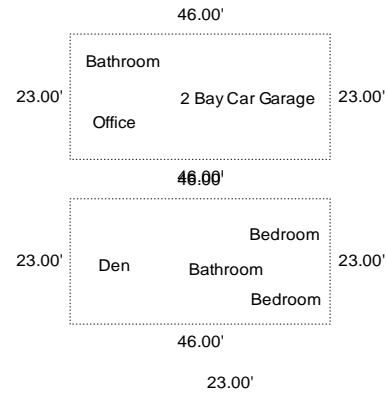


## Building Floor Plans

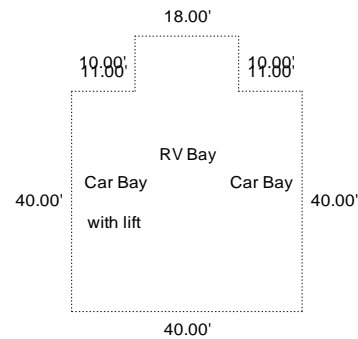
### Main House



### Detached Garage



### RV Bay



### 4-Bay Garage

